



# One Thames City

## Capital | Thermal

This large residential project is situated across 2 towers extending up to 53 storeys. The prestigious project provides residents with access to a 24-hour concierge, private cinema, and fully equipped gymnasium.

Capital Thermal Services provided the Fire Rated Insulation to Flameshield Ductwork.

The Capital Thermal team worked alongside ASM to develop and install specialist damper insulation whilst working alongside the Flameshield Ductwork system.

This was the first project we completed on the new Vauxhall development. Since completion, we have secured work with four clients across five new projects, all within the same development.

Overall service provided on this project:



Fire Rated  
Insulation



Flamesheild  
Ductwork

### **WHAT**

Residential,  
Commercial & Retail

### **WHERE**

London

### **COMPLETED**

26 months

### **PROJECT VALUE**

£900,000

### **MAIN CLIENT**

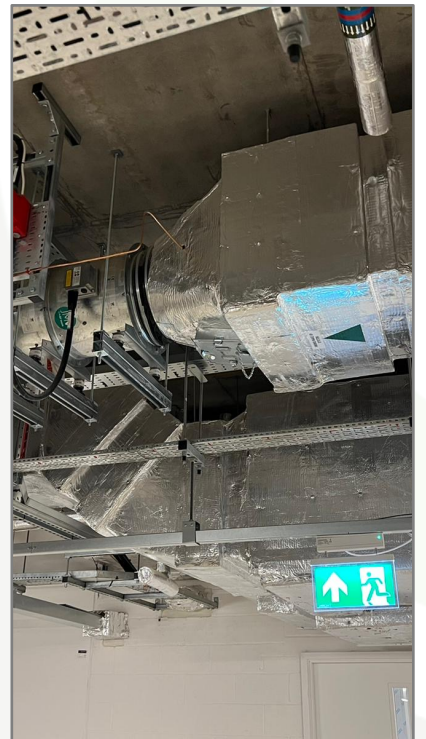
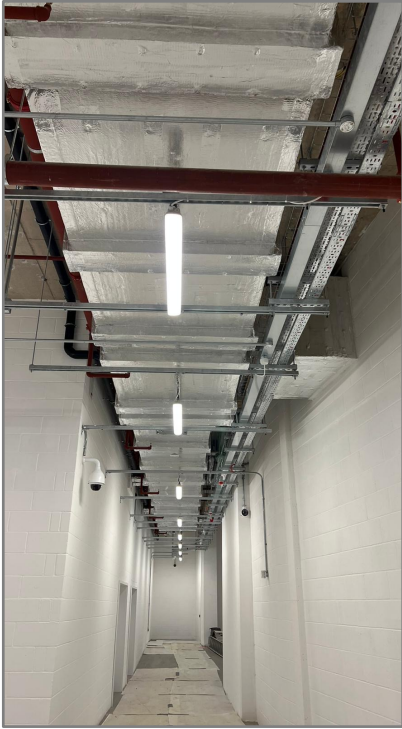
JLR

### **OUR CLIENT**

ASM



# Capital | Thermal



**One Thames City**